

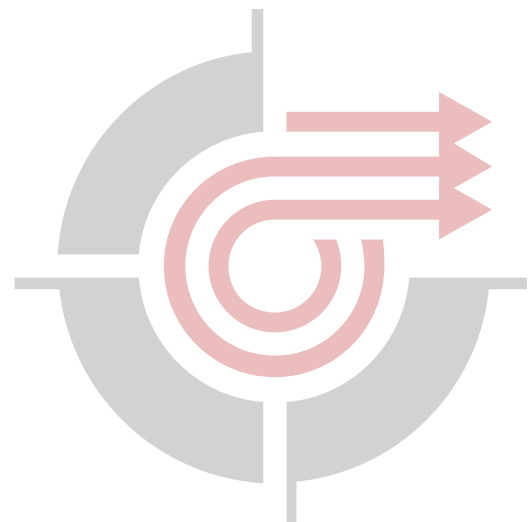


AGRI-PLAN is a user-friendly web-based application that transforms your farming experience. It's the ultimate solution for farmers seeking to optimize field productivity, even if you're not a computer expert.

Say goodbye to the confusion of variable field navigation and different autosteering system brands. AGRI-PLAN seamlessly integrates with all major systems, making data input a breeze. You can easily plan your work in advance, knowing the total track length, time required, and total headland turn numbers.

This versatile tool imports fields from various sources, automatically generates guidance lines, and optimally divides fields for precise machinery operation. Plus, it's tailored to European farmers' needs, developed by farmers themselves.

Join the future of farming with AGRI-PLAN – your partner for productivity and precision without the need for extensive technical know-how.



**AGRI-PLAN ANNUAL FEE:**

**600 EUR**

## PLAN THE OPTIMAL ROUTE

The automatic generation of guidance lines allows you to create optimised routes for the shortest route on all plots in one click.

The individual approach to the creation of custom lines, regardless of their shape, is always under absolute agronomic and economic supervision.

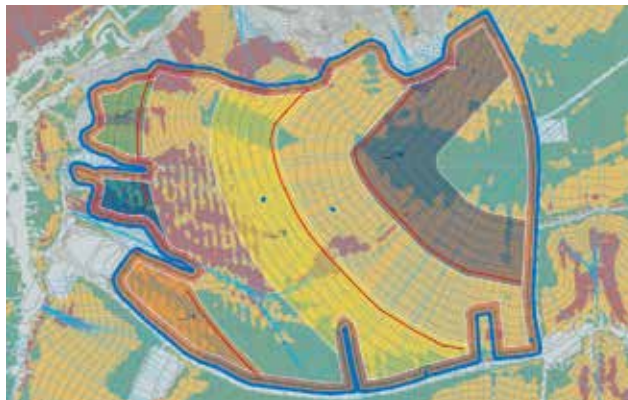
Every change in the guidance lines is immediately reflected in the total job summary, which includes the total distance, headland turns, and time.



## LAND DIVISION

AGRI-PLAN allows the division of land in close relation to the direction of the work width.

The division of fields can be accomplished by specifying the exact area of the new inner field, the distance from the original boundary, or by using freehand drawing, which can be complemented with basic CAD tools



## WIDE COMPATIBILITY

EXPORT TO MOST NAVIGATION SYSTEMS ON THE MARKET

AGRI-PLAN simplifies data communication for most agricultural navigation systems on the market. It can even serve as an easy converter among many different navigation system brands.

- ◆ Raven
- ◆ Trimble
- ◆ Topcon
- ◆ John Deere
- ◆ CASE IH
- ◆ New Holland
- ◆ Claas
- ◆ Fendt
- ◆ Massey Ferguson
- ◆ Valtra
- ◆ FJ Dynamics
- ◆ CHC Nav
- ◆ and other...



Direct connection to RAVEN VTD, My JohnDeere and other systems coming soon.

